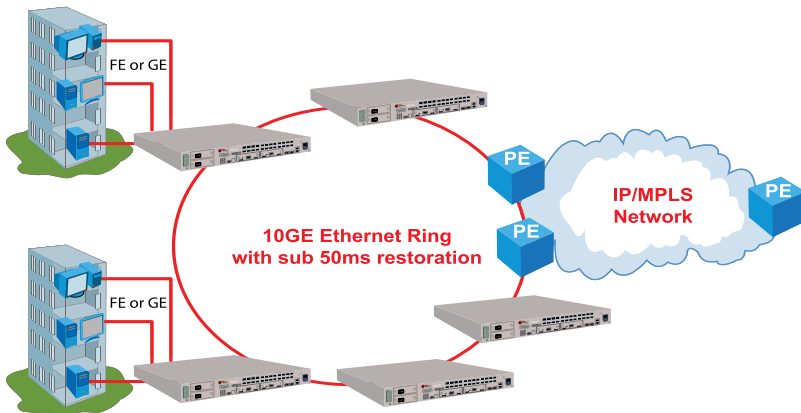


## AGGREGATION - Carrier-grade 10 Gigabit Solution



No longer relegated to the world of storage area networks and data centers, 10 Gigabit Ethernet has found a home in the telecom network. In order to meet the bandwidth demands of the access network, providers need to be able to scale and add bandwidth cost effectively.

Engineered specifically for the telecom network, Telco Systems offers a 10-gigabit multi-layer Ethernet switch to meet the performance needs of the service provider's access network.

### TARGET MARKET SEGMENTS

- ILEC
- CLEC
- Municipal Providers
- Cable MSO
- Utilities

- 1 **Two fixed 10 Gigabit Ethernet, wirespeed, non-blocking** ports with expansion to four
- 2 **Extended operating temperature** -20°C to 65°C (-4°F to 149°F)
- 3 **Compact size** - 1.5RU height - with low power consumption and all connections in front
- 4 Wide variety of **resiliency protocols** - resilient-link, LAG with LACP, STP, RSTP, MSTP and Fast-Ring and G.8031
- 5 Aggregates up to 24 100/1000 Base-T/FX/X connections
- 6 Enhanced **Quality-of-service(QoS)** and service granularity support
- 7 Extensive **Operations, Administration and Maintenance (OAM)** support
- 8 **MEF, IEEE, ITU-T and IETF** compliance for multi-vendor interoperability
- 9 **Service Mediator** automates IP management to make the network more secure and scalable
- 10 Comprehensive set of **security features** for authentication, connectivity and access control

### AGGREGATION SWITCHES



**T5C-XG** - for 10GigE aggregation

## 10 GIGABIT AGGREGATION

### 1 Do you deploy broadband triple-play services and/or business Ethernet services??

T5C-XG service multiplexing capability enables service providers to deliver multiple, isolated, services on a per-port and/or a per-flow basis. Provisioning, monitoring, and troubleshooting of each individual service doesn't impact other services.

### 2 Does your network have a current or future requirement for 10GE?

The T5C-XG offers the carrier an ideal solution, incorporating high capacity in a compact size (only 1.5RU in height, 10 inches in depth). T5C-XG supports 24 Gigabit Ethernet plug-in (SFP) ports, two 10Gigabit XFP ports and an expansion slot that houses two additional 10Gigabit ports.

### 3 Does your networking architecture require extended temperature support ?

The T5C-XG supports operating temperatures ranging from -20°C to 65°C (-4°F to 149°F) to offer more flexibility in design

### 4 Are you looking to lower your per port cost on Ethernet Service aggregation?

T5C-XG Switch Platform 24 Gigabit Ethernet SFP Ports	Per Node \$14,899 List Per Port \$620.79 List	Per Node \$20,502.00 Per Port \$854.25	10 GE \$208,586.00 20 GE \$287,028.00
CISCO 4924 Supports (2) 10 GE Uplinks Only	Per Node \$33,399.99 Per Port \$1,391.66	Not Supported	10 GE \$467,599.97 20 GE NO SUPPORT

### 5 Do you have MPLS requirements?

Telco Systems' newly released T-Metro 7224 offers support for MPLS and is a cost-effective Provider Edge (PE) switch.

#### Contact Information:

Toll-free 800.221.2849  
Fax 781.255.2344  
Pre-Sales/Ordering/Proposals 781.225.2250  
Pricing/Availability 781.225.2121  
sales@telco.com



www.telco.com